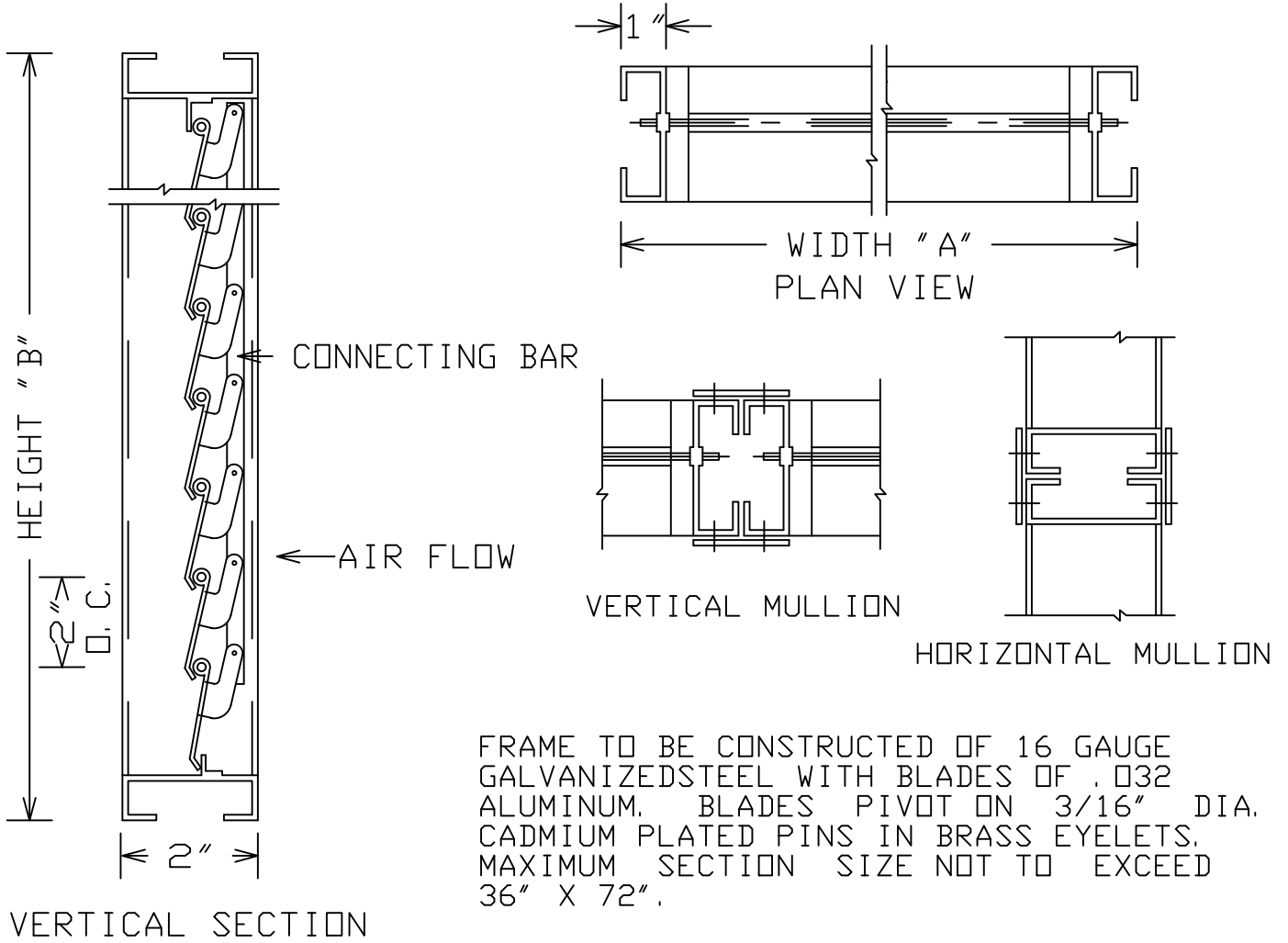


HDALD-2 BACKDRAFT DAMPER



FRAME TO BE CONSTRUCTED OF 16 GAUGE GALVANIZED STEEL WITH BLADES OF .032 ALUMINUM. BLADES PIVOT ON 3/16" DIA. CADMIUM PLATED PINS IN BRASS EYELETS. MAXIMUM SECTION SIZE NOT TO EXCEED 36" X 72".

ITEM	QTY.	DUCT SIZE		DAMPER SIZE		REMARKS
		A	B	A	B	

PROJECT:	DATE
LOCATION:	CONTROL NO.
CUSTOMER:	SHEET OF
LOUVERS & DAMPERS	WONDER METALS CORP. REDDING CALIFORNIA