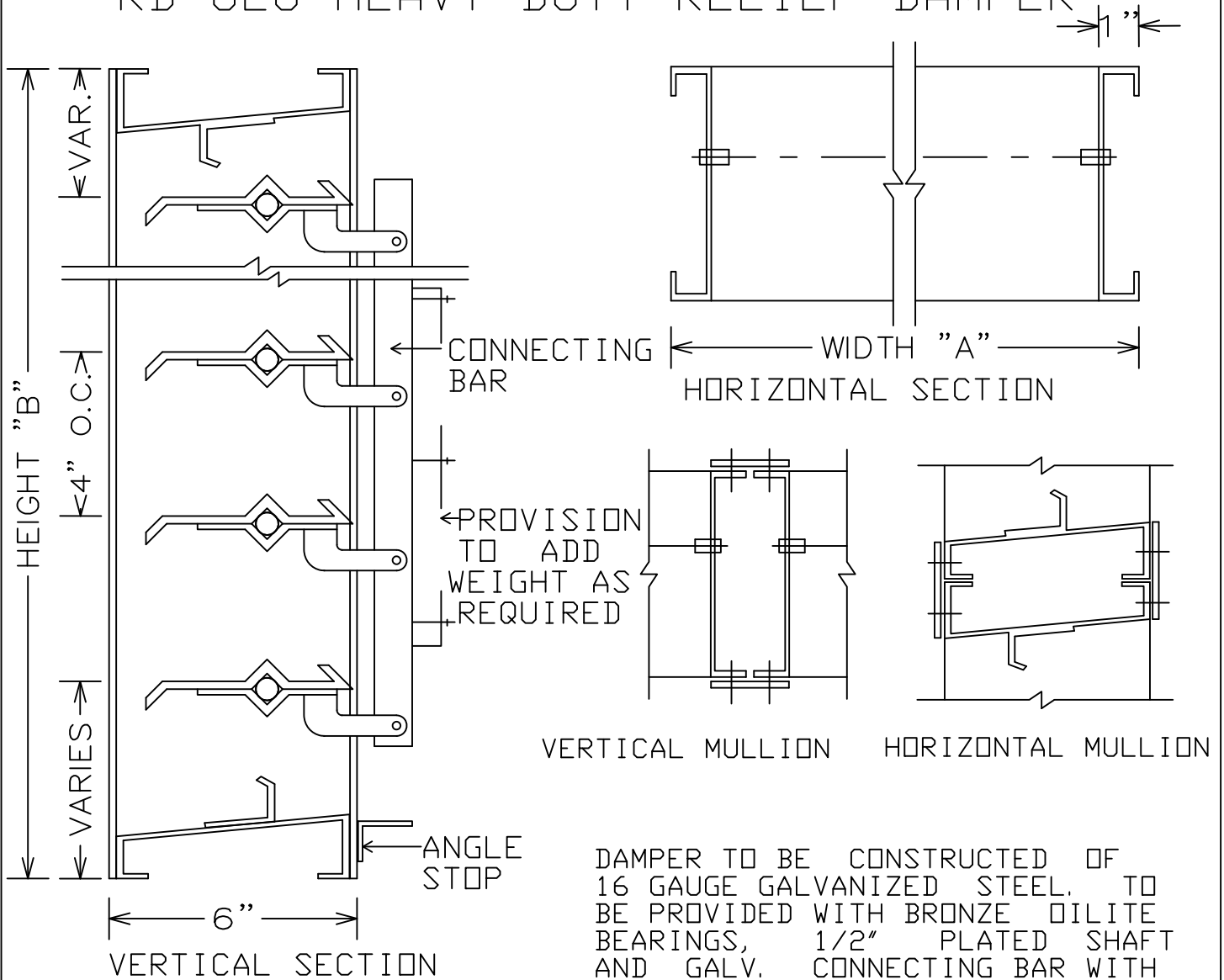


RD-626 HEAVY DUTY RELIEF DAMPER



DAMPER TO BE CONSTRUCTED OF 16 GAUGE GALVANIZED STEEL. TO BE PROVIDED WITH BRONZE OILITE BEARINGS, 1/2" PLATED SHAFT AND GALV. CONNECTING BAR WITH PROVISION FOR COUNTERBALANCING WEIGHT.

ITEM	QTY.	DUCT SIZE		DAMPER SIZE		REMARKS
		A	B	A	B	

PROJECT:	DATE
LOCATION:	CONTROL NO.
CUSTOMER:	SHEET OF

LOUVERS & DAMPERS WONDER METALS CORP. REDDING CALIFORNIA