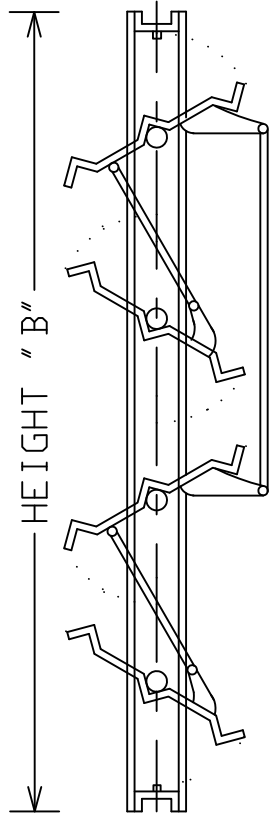
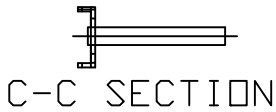
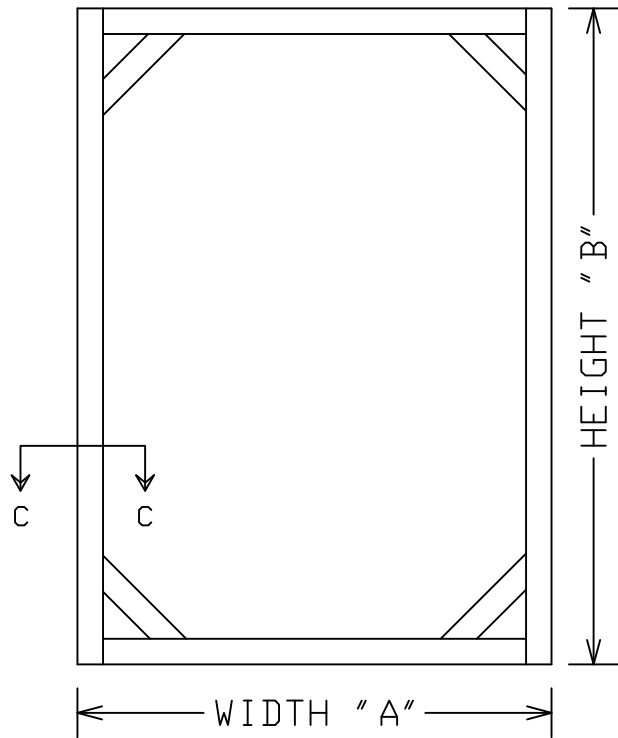


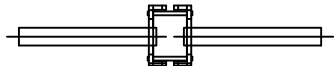
D-2 MIXING DAMPER



VERTICAL SECTION



C-C SECTION



MULLION SECTION

DAMPERS TO BE CONSTRUCTED OF 2" X 1/2" X 12 GAUGE HOT ROLL STEEL FRAMES AND 16 GAUGE GALVANIZED STEEL BLADES. MAXIMUM LENGTH OF BLADES NOT TO EXCEED 48". MAX. BLADE WIDTH IS 10".

EDGES TO INTERLOCK, 1/2" BRONZE DILITE BUSHINGS W/ 1/2" DIA CONTINUOUS STEEL SHAFT. PRESSED STEEL BRACKETS, BRASS PIVOT BEARINGS WITH 1/4" DIA. STEEL ROD.

ALL FRAME CORNERS TO BE WELDED AND BRACED MINIMUM HEIGHT IS 8".

FINISH: PAINTED SPRAYED ALUMINUM

ITEM	QTY.	DUCT SIZE		DAMPER SIZE		OPTIONAL FEATURES
		A	B	A	B	
						<input type="checkbox"/> PVC BLADE SEALS <input type="checkbox"/> NEOPRENE BLADE SEALS <input type="checkbox"/> METAL SIDE STOPS
						REMARKS

PROJECT:	DATE
LOCATION:	CONTROL NO.
CUSTOMER:	SHEET OF