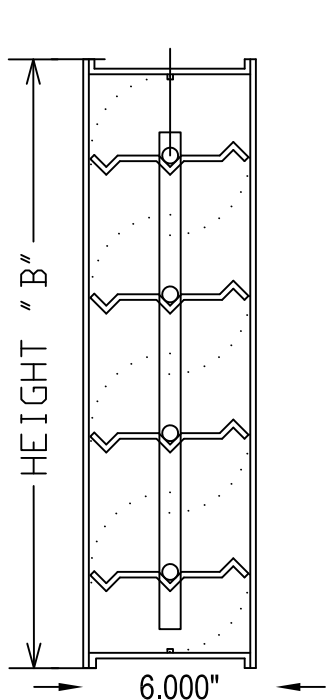
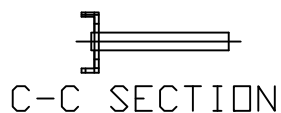
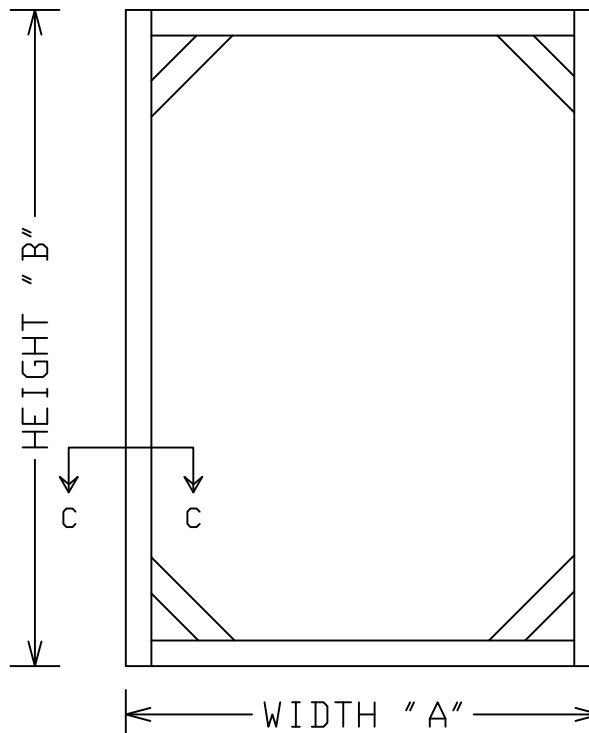


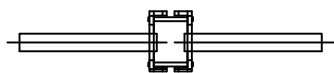
# D-1 MIXING DAMPER



VERTICAL SECTION



C-C SECTION



MULLION SECTION

DAMPERS TO BE CONSTRUCTED OF 6" X 1/2" X 16 GA GALVANIZED STEEL FRAMES AND 16 GA GALVANIZED STEEL BLADES. MAXIMUM LENGTH OF BLADES NOT TO EXCEED 48". MIN BLADE WIDTH IS 6".

EDGES TO INTERLOCK, 1/2" SELF-LUBRICATING BRONZE DILITE BEARINGS WITH 1/2" S/S SHAFT. PRESSED STEEL BRACKETS, BRASS PIVOT BEARINGS WITH 1/4" DIA. STAINLESS ROD. 5/16" DIA MOUNTING HOLES AT 18" MAX. CENTERS CENTERS. TWO CORNERS BRACED ON FRAMES OVER 4 SQ. FT. ALL CORNERS BRACED WHEN OVER 8 SQ. FT. MINIMUM HEIGHT IS 8".

ITEM	QTY.	DUCT SIZE		DAMPER SIZE		OPTIONAL FEATURES
		A	B	A	B	
						<input type="checkbox"/> POLY FOAM BLADE SEALS <input type="checkbox"/> POLY FOAM JAMB SEALS <input type="checkbox"/> METAL SIDE STOPS
						REMARKS

PROJECT:	DATE
LOCATION:	CONTROL NO.
CUSTOMER:	SHEET OF

LOUVERS & DAMPERS      WONDER METALS CORP.      REDDING CALIFORNIA